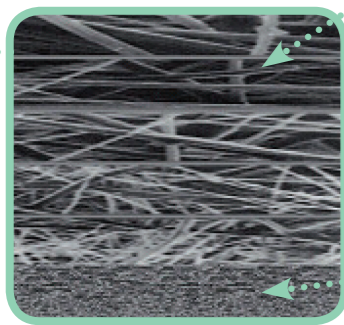


- 1 QUICK and CLIP connector available
- 2 "protective skirt" concept
- 3 Straight and shower outlets available



Prefiltration Polypropylene
3 µm with "funnel effect" density gradient (10 µm to 3 µm).

FOR FILTRANIOS 30LP:
1µm with density gradient (5 µm to 1 µm)

0.2 µm asymmetric membrane in PolyEtherSulfone

PLEATING OF THE PREFILTRATION AND FILTRATION MEMBRANES

- The separation of the filtration layers enables the collection of a larger mass of contaminants.
- The asymmetry of the membranes, which have an airier structure on the upstream side (1 µm) than on the downstream side (0.2 µm), extends the lifespan of the filter and improves the retention of contaminants and the flow rate compared to a symmetrical structure.
- In many cases (depending on the water quality), the use of an upstream prefiltration system is no longer required.

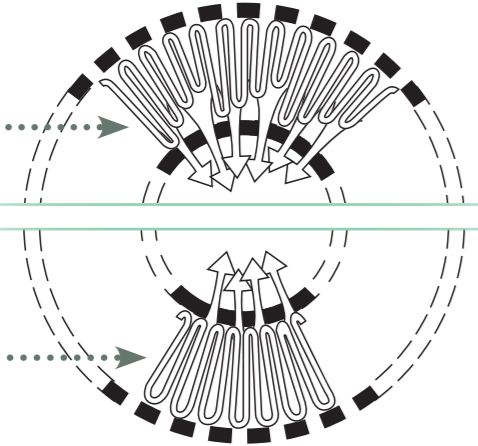
SELECT-PLEATING (MULTI-HEIGHT)

FOR

FILTRANIOS 31 LPS+
FILTRANIOS 62 LPA+
FILTRANIOS 62 LPS+

FOR

FILTRANIOS 30 LP
[A and B]



STANDARD PLEATING



**2018
2016**

FILTRANIOS 62 LPA+ and 62 LPS+, retention of Legionella.



2015

FILTRANIOS 2M and 2MS, 62 days all germs.



2009

FILTRANIOS 31 DA, 31 DS, 31 LPS, 31 days multi-height folding, all germs and Legionella.



2005

FILTRANIOS Seven, single use, 7 days for all germs and FILTRANIOS 30 LP, single use for 30 days, retention of Legionella.



1998

FILTRANIOS PV1000 Compact, membrane in PVDF.



1992

FILTRANIOS N1000 Compact, sterilisable filter (60 days).



1991

FILTRANIOS N500 Compact, monobloc concept filter.



1983

Creation of traceability label, resistant to sterilisation and integral with the box



1982

FILTRANIOS N500, filter box ready-for-use fitted with a folded membrane and connected by a quick-fit connector.



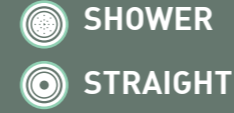
1979

FILTRANIOS 90, filtration through single-use disc membrane.

2 TYPES OF CONNECTOR



2 TYPES OF OUTLET



31
DAYS

FILTRANIOS 30 LP A

- Shower outlet..... 432.420
- Straight outlet..... 432.422
- 1/2 threaded outlet 432.421

62
DAYS

FILTRANIOS 62 LPA+

- Shower outlet..... 432.518
- Straight outlet 432.517

FILTRANIOS 30 LP B

- Shower outlet..... 432.430
- 1/2 threaded outlet 432.431

31
DAYS

FILTRANIOS 31 LPS+

432.176

62
DAYS

FILTRANIOS 62 LPS+

432.516



SELECTION
FILTERS

RETENTION OF LEGIONELLA IN WATER

FILTRANIOS 30 LP A AND B

FILTRANIOS 31 LPS+

FILTRANIOS 62 LPA+

FILTRANIOS 62 LPS+



Pavé du Moulin - 59260 Lille-Hellemmes - FRANCE
Tél. +33 3 20 67 67 67 - Fax +33 3 20 67 67 68

www.anios.com

EN 2019-07 - Filtration retention, legionella - Non-contractual pictures
Dangerous - Respect the precautions for use. Please read the label and product information before use.

FULL TRACEABILITY



2 traceability labels on the bag, of which one can be detached and repositioned, to update the tracking log.

1 traceability label on the filter with barcodes and the unique logistic No. Only fitting and removing dates of the filter must be entered.

Information printed on the filter for absolute and unique traceability: filter reference, designation, batch No., individual serial No., 2D barcodes with batch No. and serial No. (factory use).

MONOBLOC CONCEPT

- Assembled by thermowelding without glue
- Resistance to chemical treatments.
- No brittle point.



INDIVIDUAL BAG

Each filter is supplied in an individual protective bag ensuring sterility until the tap is fitted.

THE (+) OF FILTRANIOS 62 LPA+, 30LP

Filter sterilised by gamma irradiation.

PROTECTIVE SKIRT

Filter outlet protected from any contamination brought by hand.

CONTROLLED FLOW RATE

Sharp straight jet, prevents splashing and harsh impact of water on skin.

ECO-DESIGN

- Being compact and recyclable, FILTRANIOS offer an attractive monobloc design made with few components.
- The lightness of FILTRANIOS enables potential on-site reprocessing to limit their impact on the environment.
- Filter weight optimisation: **less processed materials**, reduced quantity of waste.
- FILTRANIOS are designed without undesirable additives (Epoxy derivatives, Bisphenol A (PBA), Dioxin, Latex, Lactose, Phthalate (DEHP), Plasticisers, Gluten, Asbestos, Polychlorobiphenyls (PCB), Melamine)
- **Reduced volume of outer packaging:** optimised packaging volume to limit the environmental impact of transport.



SHOWER

	FILTRANIOS 31LPS+	FILTRANIOS 62 LPS+
PREFILTRATION LAYER	3 µm polypropylene, with "funnel effect" density gradient from 10 µm to 3 µm	
FILTRATION MEMBRANE	0.2 µm asymmetric polyethersulfone	
SUPPORT AND DRAINAGE LAYERS	Polypropylene	
FILTER BODY	Polypropylene	
EFFECTIVE FILTRATION AREA (EFA)	711 cm ² ("select pleating" conception - multi-height)	
FILTRATION FLOW RATE	23 litres/minute at 3 bar	13 litres/minute at 3 bar
MAXIMUM CONDITIONS OF USE	5 bar at +60°C	
THERMAL RESISTANCE	124 cycles of 5 min at +60°C from 0 to 5 bar + 1 cycle of 30 min at +70°C at 4 bar + 1 cycle of 30 min at +90°C at 4 bar	620 cycles of 7 min at +45°C at 5 bar, followed by 8 cycles of 60 min at +60°C at 5 bar + 2 cycles of 30 min at +90°C at 3 bar
CHEMICAL RESISTANCE	- Active chlorine: > 1000 ppm at +40°C for 31 days - PAA: 250 ppm at +40°C for 31 days	Active chlorine: 150 ppm - 10 cycles of 30 min at +40°C at 3 bar
BURST PRESSURE	at +60°C : >11 bar	at +60°C : >22 bar
DIMENSIONS	Length: 222 mm Height: 68 mm ø Shower head: 81 mm	Length: 222 mm Height: 68 mm ø Shower head: 81 mm
WEIGHT	138 grams	137 grams

CAPSULE

	FILTRANIOS 30LP (A and B)	FILTRANIOS 62 LPA+
PREFILTRATION LAYER	1 µm polypropylene, with "funnel effect" density gradient from 5 µm to 1 µm	
FILTRATION MEMBRANE	0.2 µm asymmetric polyethersulfone	
SUPPORT AND DRAINAGE LAYERS	Polypropylene	
FILTER BODY	Polypropylene	
EFFECTIVE FILTRATION AREA (EFA)	415 cm ² (A), 825 cm ² (B) ("standard pleating" conception)	711 cm ² ("select pleating" conception - multi-height)
FILTRATION FLOW RATE	6.3 litres/minute at 3 bar (A) 11.5 litres/minute at 3 bar (B)	7.4 litres/minute at 3 bar
MAXIMUM CONDITIONS OF USE	5 bar at +50°C	
THERMAL RESISTANCE	5 cycles of 30 min at +70°C at 3 bar 5 cycles of 30 min at +90°C at 3 bar	1240 cycles of 5 min at +45°C at 5 bar, followed by 8 cycles of 60 min at +60°C at 5 bar + 2 cycles of 30 min at +90°C at 3 bar
CHEMICAL RESISTANCE	- Active chlorine: > 1000 ppm at +40°C for 31 days - PAA: 250 ppm at +40°C for 31 days	Active chlorine: 150 ppm - 10 cycles of 30 min at +40°C at 3 bar
BURST PRESSURE	at +50°C : >20 bar	at +60°C : >25 bar
DIMENSIONS	Height: 65 mm (A) - 100 mm (B) ø Capsule: 76 mm ø Shower: 54 mm	Height : 64 mm (straight) - 62 mm (Shower) ø Capsule: 76 mm ø Shower: 54 mm
WEIGHT	100 grams (A), 135 grams (B)	102 grams

FITTING

- Do not clean the filter.
- Do not remove the filter before the end of the period of use (31 days or 62 days).
- Imperatively change the filter on the last day of use (31 days or 62 days).



Avoid placing your hands on the filter's protective skirt.

- During the first use, keep the top of the shower head pointed upwards.
- Never place the shower anywhere out of its holder.

A PROVEN EFFECTIVENESS VALIDATED

- Validated to comply with ASTM F 838 "bacterial challenge" standard on Brevundimonas diminuta: 0.2 µm sterilising grade membrane.
- Validated over the period of use (31 days / 62 days) to comply with ASTM F 838 standard (bacterial challenge) on Legionella pneumophila, thus validating the use of FILTRANIOS for 31 days / 62 days.
- Compatible with **heat treatment process** used in hospitals: +60°C, +70°C and +90°C.
- Compatible with **chemical treatment process** used in hospitals: chlorine.
- Materials used are compliant with EC 1935/2004 and EC 10/2011 regulations linked to plastic materials and objects intended to be put **in contact with foodstuffs**.